



Northwest Equipment Sales
a division of Northwest Equipment Manufacturing, Inc.
122 East Reserve Dr. • Kalispell, MT 59901 USA
• Office: 406-755-0805 • Fax: 406-755-0813
*Team Bear USA is a Factory Trained Independent Service Center for
the "Legacy Series" Bear Product Line*



Reach us at: **877-FIX-BEAR (877-349-2327)**

The CCD camera technology introduced by Bear in 1990 was so good it is what all major manufacturers are using today in modern wheel alignment equipment.

The complete NWES Wheel Alignment for Windows XP upgrade kit will turn your older non-windows CCD 1000, 1500, 2500, 3000, or Pace Series machine into a machine with the look and feel of a brand new state of the art wheel aligner.

The cost is much less than a replacement machine and it comes with a One-Year warranty! This kit has everything needed to transform your older machine into the look and feel of the brand new machines available today, and we pre-load the software and configure the system for you!

The complete package includes: a refurbished late model Pentium processor system running Windows XP, Keyboard, Mouse, genuine Bear Alignment Software for Windows, Current Vehicle Spec Updates, software security dongle key, updated Proms for your wheel units, operator's manual, and a Custom Wiring Harness to connect your interface box. (Exchange required on Proms and computer.)

Use your existing monitor, or purchase a new LCD flatscreen monitor. You also have your choice of any Windows-compatible printer, and you can tie into your existing shop network, connect to the Internet, and run other shop programs such as diagnostic information, invoicing, etc.

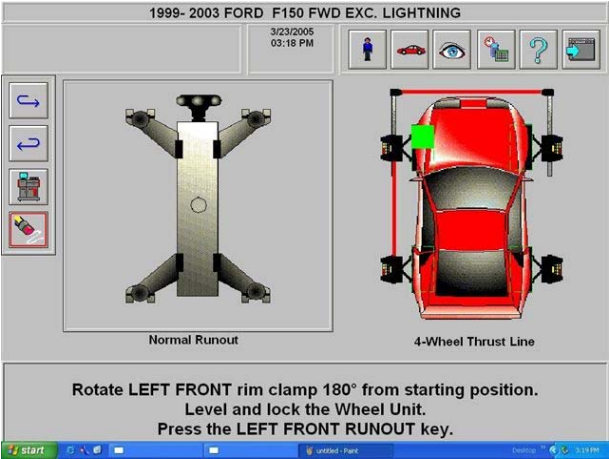
We have attached some screen shots to give you a sample of the new program features:



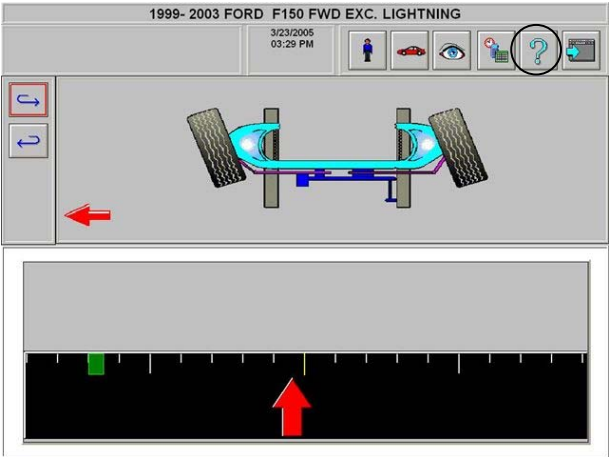
Main Screen

Make quick and easy selections with the click of a mouse. The orange and yellow keypad used on many machines will no longer be required.

With the click of a mouse, choose 2-point, 4-point, or rolling runout.



Runout Screen



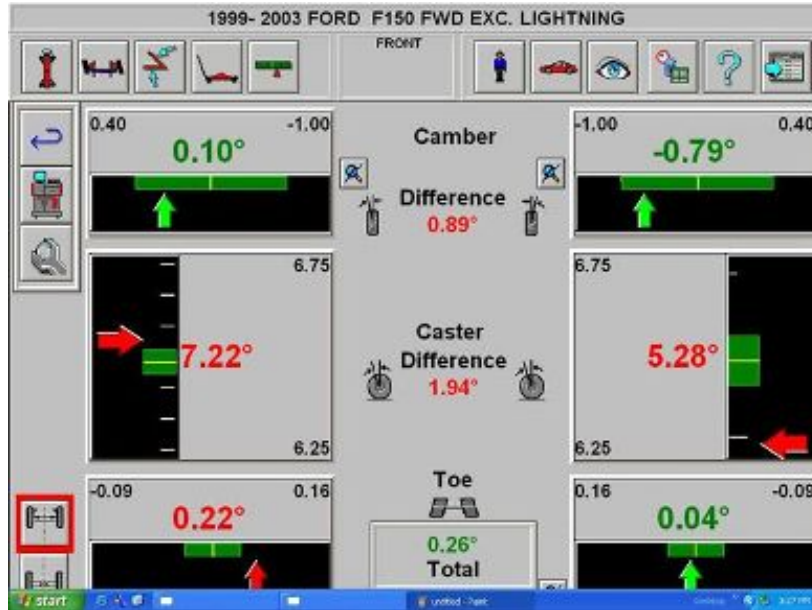
Caster Swing

Click on the question mark at any time for access to the built-in help screens.

Icons located along the left side screen allow the user to quickly save readings. You may also choose to add your saved readings, vehicle specs, to the display, or choose only current readings as shown here.

1999- 2003 FORD F150 FWD EXC. LIGHTNING		
3/23/2005 03:32 PM		
Left	Front	Right
0.10°	Camber	-0.89°
5.80°	Caster	4.06°
0.22°	Toe	0.04°
12.83°		0.26°
SAI		13.69°
Setback		1.97°
Left	Rear	Right
-5.56°	Camber	-5.29°
-0.32°	Toe	0.87°
0.59°		0.55°
Thrust Line		

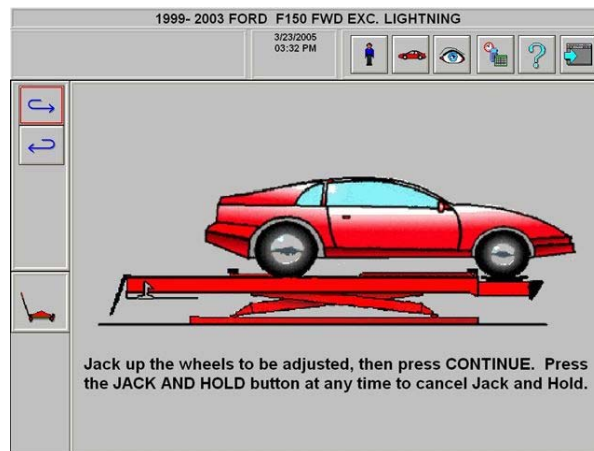
Main Readings Screen



Click on the magnifying glass to see only that wheel's readings. Quickly choose front or rear readings with the selection at the lower left corner.

Graph Adjusting Screen-provides "live" readings

Jack and Hold helps achieve more accurate adjustments when lifting is required.



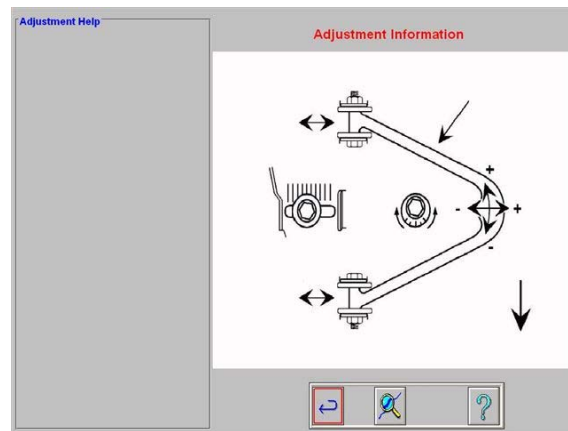
Jack and Hold Screen-prepares for "live" lifted readings



Ever wonder if your readings are accurate? A built-in calibration test function allows you to determine quickly if calibration is required.

Integrated Calibration. Test-check your unit yourself

Need to train the new guy or just learning yourself? These screens can be a valuable resource and are full of helpful information.



Adjustment Illustrations and Videos help visualize service approach

Kit Installation is a Snap! With help from our free phone tech support, simply slide out your existing computer case, and slide in the replacement. Replace the keyboard and hook up the mouse, then follow our directions to update your wheel sensors with the included components. It's that easy, this whole process should take about an hour!

Then just box up your old computer and CPU Proms and call NWES!

Now enjoy using your "New" wheel alignment machine! Need replacement cables or even a custom built "In-Rack" wiring kit, we do that too!

NOTE: Replacement Prom chips to update your existing wheel units are required to use this software and are included with this kit from NWES. Wheel sensor calibration is suggested, ship us your wheel units and we will completely evaluate their condition and perform a complete calibration for one low price. We will also replace the wheel unit Prom chips for you at no additional labor charge!

A core charge may be assessed on any physically damaged cores that cannot be reused. When upgrading the CCD 1500 handheld system, a standard PC type monitor will be required, and is not included in this kit. The cabled remote control used with non-Windows systems will not function with the new Windows software. We do have video kits available to remotely locate a second monitor for convenient rear adjustment viewing.

*Prices Subject To Change without Notice